

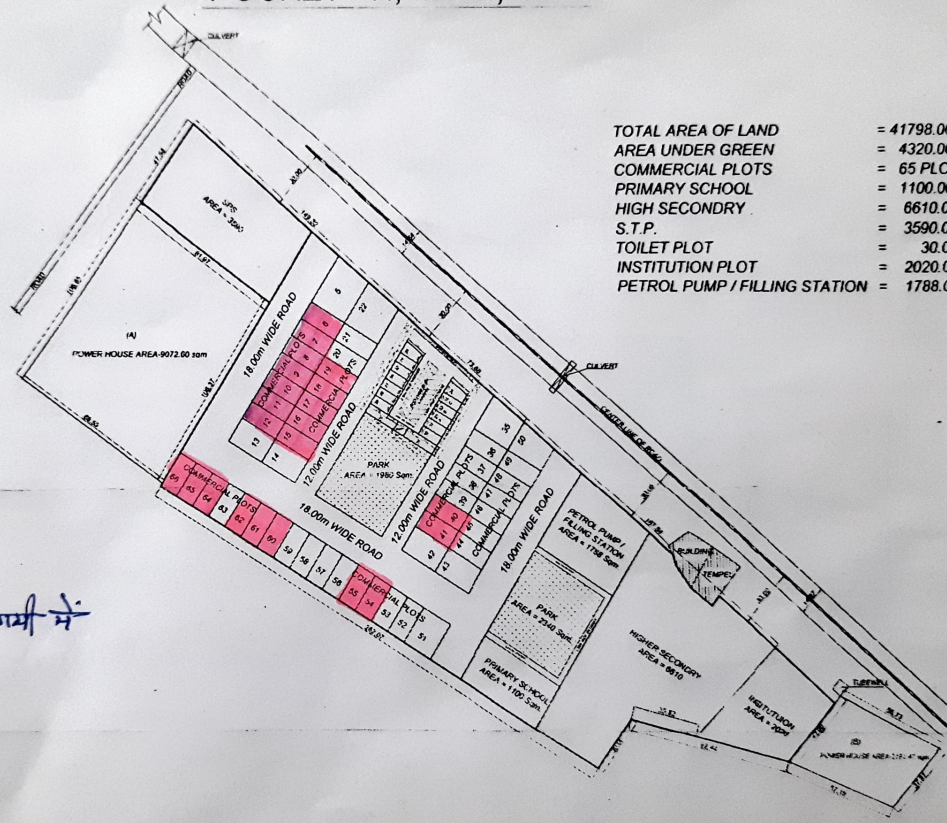
# REVISED PART LAYOUT PLAN OF COMMERCIAL LAND IN INDRAPRASTH YOZNA, POCKET - H, LONI, GZB.



**AREA SCHEDULE (COMM PLOTS)**

PLOT Nos.	AREA (IN Sqm.)
5	510.00
6 To 12	195.00
13 & 14	270.00
15 To 21	195.00
22	445.00
23	64.05
24 To 29	55.00
30 & 31	85.00
32 & 33	55.00
33A, 33B & 33C	55.00
34	65.00
35	386.00
36 To 41	195.00
42 & 43	270.00
44 To 49	195.00
50	292.00
51	314.06
52 To 66	195.00

नियंत्रण में



TOTAL AREA OF LAND	= 41798.00 Sqm.
AREA UNDER GREEN	= 4320.00 Sqm.
COMMERCIAL PLOTS	= 65 PLOTS
PRIMARY SCHOOL	= 1100.00 Sqm.
HIGH SECONDRY	= 6610.00 Sqm.
S.T.P.	= 3590.00 Sqm.
TOILET PLOT	= 30.00 Sqm.
INSTITUTION PLOT	= 2020.00 Sqm.
PETROL PUMP / FILLING STATION	= 1788.00 Sqm.

D/Man

Jun. Engr.

Astt. Engr.

Ex. Engr.

T.P.(R)

T.P.(K)

C.A.T.P.

SECRETARY

V.C.